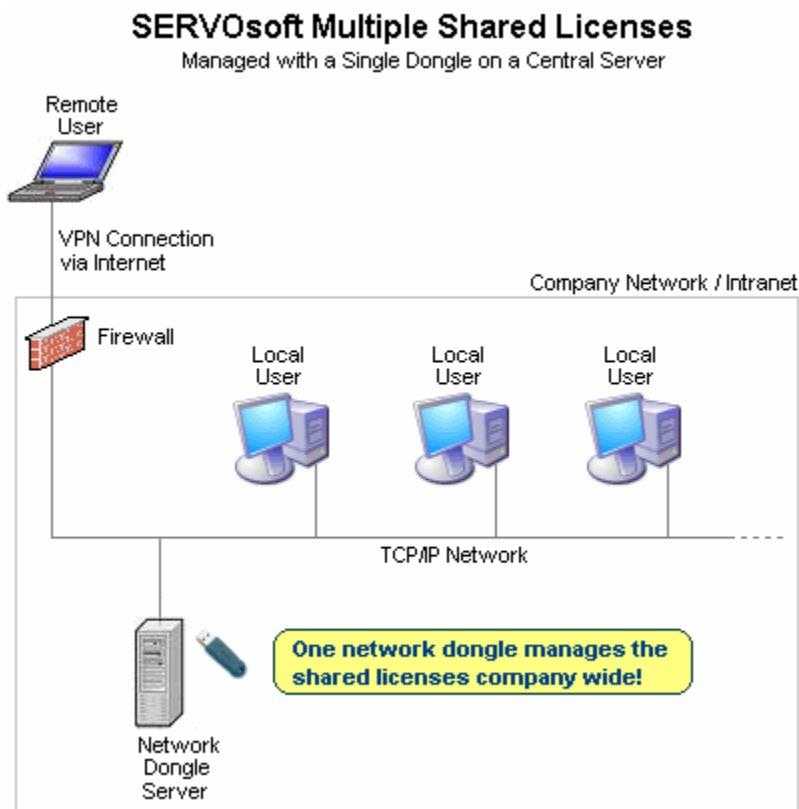


## SERVOsoft® Network Dongle Version

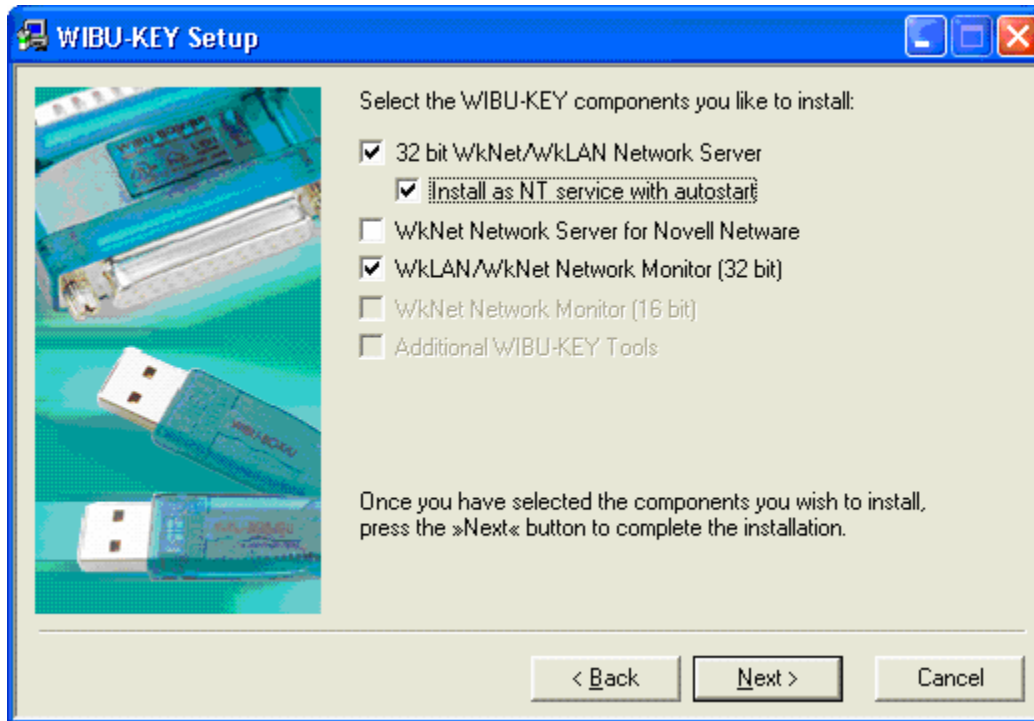
- Cost effective solution for sharing and managing multiple licenses across many users.
- Quite often, all users do not need to use SERVOsoft at precisely the same time. Therefore, a network dongle solution allows say 30 or more engineers to share 10 licenses.
- The number of shared licenses can be as few as 1, and there is no upper limit.
- The only requirement is that the user's computer must 'see' the network dongle server. Even remote VPN connections are supported.
- When you need more licenses, upgrades are a quick email away. An upgrade consists of a small file to be emailed to the network administrator and then executed on the network dongle computer. In a few seconds, the dongle is programmed and the upgrade is complete.



**Figure 1: Network Topology**

## Network Dongle Server Installation and Configuration

Install the WIBU-KEY Setup on a network server that SERVOSOFT users have access. Select the following items:



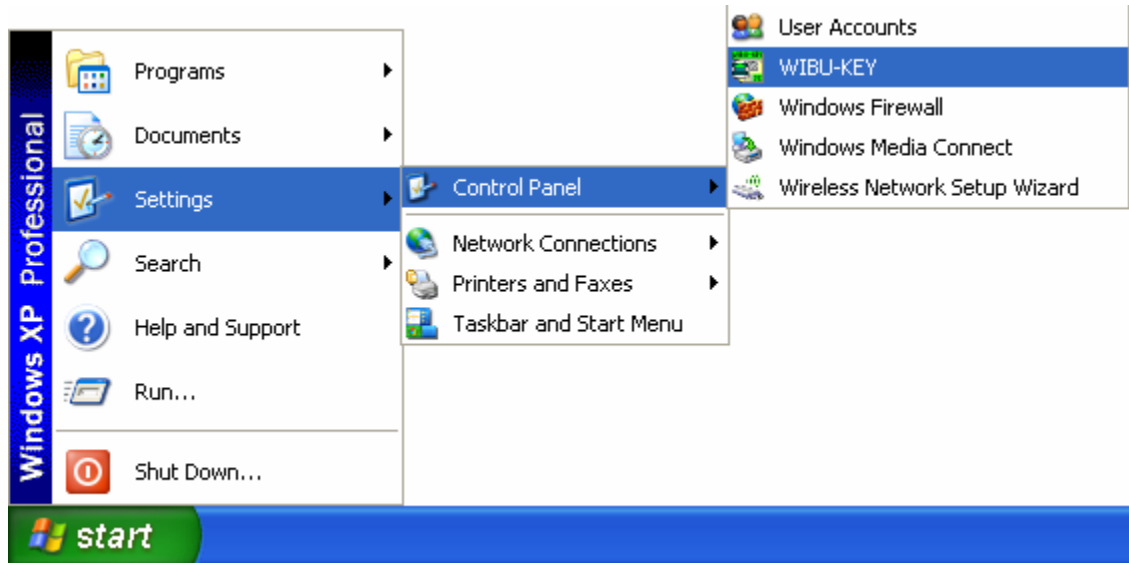
Click 'Next', and then the server installation is complete.

## Server and Client Machines on Different Subnets

In most cases the WkLAN server can be found automatically by issuing a search broadcast in the local IP subnet. If the WkLAN server resides in a different subnet (behind a router), it has to be specified in the WkLAN server search list on each client's computer.

### Add Your Server to the WkLAN Server Search List on Each Client Machine

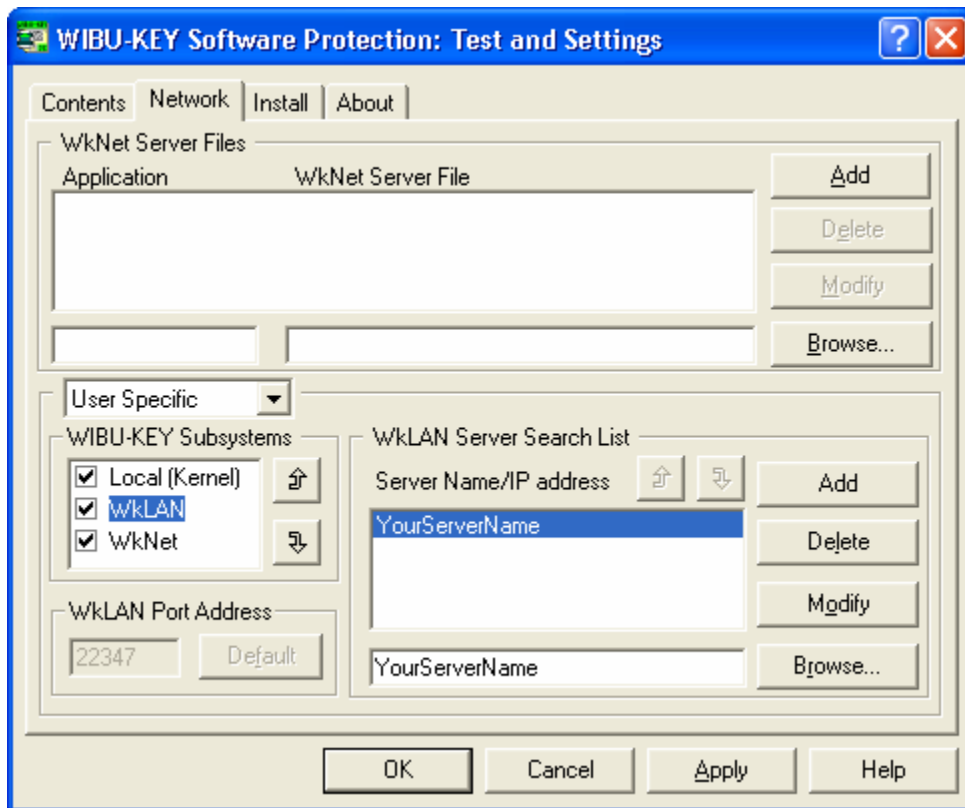
1. On the client machine, launch the WIBU Key Software Protection control panel
  - a. Start > Settings > Control Panel > WIBU-KEY



2. Under the Network tab in WkLAN Server Search List, browse the network and select your server computer. Your server is then added to the WkLAN Server Search List as shown below.

**Notes:**

1. You can also type in the server name or IP address and click 'Add'.
2. If computer names are used, DNS (Domain Name service) or WINS (Windows name service) must be installed, which takes over the allocation between computer name and IP address.



3. Repeat above on each client machine.